

## ZEAL HPE DISTROS

VERSION 1 - Updated August 2024

### Overview

Name	Input	Outputs	Notes
400/3 Type 1	400A Powerlock	1x 125/3 3x 63/3 1x 32/3 3x 16/1	
400/3 Type 2	400A Powerlock	1x 125/3 3x 63/3 2x 32/3 3x 32/1 3x 16/1	
400/3 Type 3	400A Powerlock	3x 125/3 3x 63/3 4x 32/3 3x 32/1 3x 16/1	
125/3 Type 1	125/3 Ceeform	2x 63/3 4x 32/3	
63/3 Type 1	63/3 Ceeform	1x 32/3 12x 16/1 3x 32/1	
63/3 Type 2 (True1)	63/3 Ceeform	3x Soca 18x True1 (paired)	
63/3 Type 3	63/3 Ceeform	2x 32/3	
32/3 Type 1	32/3 Ceeform	6x 16/3	
32/3 Type 2	32/3 Ceeform	3x 32/1 6x 16/1	
32/1 Type 1	32/1 Ceeform	4x 16/1	



---

## Zeal 400/3 Type 1

### Input:

400A Powerlock (MCCB)

### Outputs:

400A Powerlock (thru only, no protection)

1x 125/3 (variable RCD)

3x 63/3 (variable RCD)

1x 32/3 (variable RCD)

3x 16/1 (RCBO)



---

## Zeal 400/3 Type 2

### Input:

400A Powerlock (MCCB)

### Outputs:

400A Powerlock (thru only, no protection)

1x 125/3 (variable RCD)

3x 63/3 (variable RCD)

2x 32/3 (variable RCD)

3x 32/1 (RCBO)

3x 16/1 (RCBO)



## Zeal 400/3 Type 3

### Input:

400A Powerlock (no protection)

### Outputs:

400A Powerlock (thru only, no protection)

3x 125/3 (variable RCD)

3x 63/3 (variable RCD)

4x 32/3 (variable RCD)

3x 32/1 (RCBO)

3x 16/1 (RCBO)





---

## Zeal 125/3 Type 1

### Input:

125/3 (MCCB)

### Outputs:

1x 125/3 (thru only, no protection)

2x 63/3 (variable RCD)

4x 32/3 (variable RCD)



---

## Zeal 63/3 Type 1

### Input:

63/3 (MCCB)

### Outputs:

1x 63/3 (thru only, no protection)

1x 32/3 (variable RCD)

3x 32/1 (RCBO)

12x 16/1 (RCBO)



## Zeal 63/3 Type 2

### Input:

63/3 (MCCB)

### Outputs:

1x 63/3 (thru only, no protection)

18x 16/1 True1 (RCBO)\*

3x Socapex (RCBO)\*

*\*True1 and Socapex circuits paired*



---

## Zeal 63/3 Type 3

### Input:

63/3 (MCCB)

### Outputs:

1x 63/3 (thru only, no protection)

2x 32/3 (variable RCD)



---

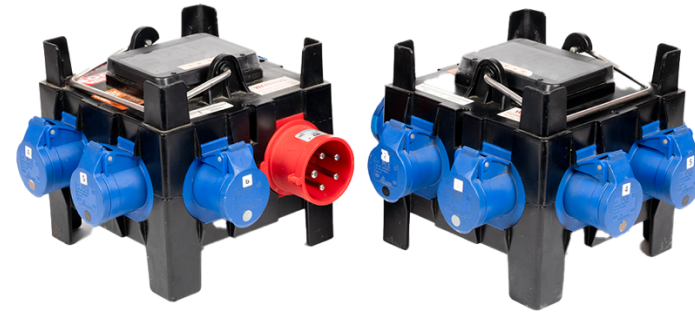
### 32/3 Type 1

**Input:**

32/3 (no incoming protection)

**Outputs:**

6x 16/1 (RCBO)



### Zeal 32/3 Type 2

**Input:**

32/3

**Outputs:**

32/3 (thru only, no protection)

3x 32/1 (RCBO)

6x 16/1 (RCBO)



---

## Zeal 32/1 Type 1

### Input:

32/1 (RCBO protection)

### Outputs:

1x 32/1 (thru)

4x 16/1 (MCB)

